
Extend Venue Security with Integrated
VMS Technologies

Evolv Express® Genetec Security Center VMS (Video Management System) Integration

Connected Security Technologies Reduce Venue Risks

With so many new security technologies coming to market, introducing a new approach to weapons detection should help unify—not further fragment—a venue’s security ecosystem. Extending communications from the vital venue entrances to the extended security team, no matter where they are located, is key to shortening response time and improving overall situational awareness. And providing visibility into what weapons are being detected, where, and when should help to accelerate response time, not unduly burden IT staff or introduce new risks.

Leverage the Power to See Weapons Threats at Every Venue Entrance

With the Evolv Express integration to Genetec Security Center, VMS (Video Management System) platform, potential weapons threats identified by the Express system and verified by security teams are instantly communicated to the SOC (Security Operations Center) or anywhere else the software is used via the Genetec Security Center screens.

With these integrations, teams with access to the Genetec Security Center can quickly and easily see:

- The type of threat item verified by Evolv Express operators
- Time, date, and location of threats

- Alert images of the specific individual identified with the verified threat and where on their person it was located
- Any request for backup or assistance made by the operators
- Video stream from any venue camera or from the Express surveillance camera that has been associated with Express alert alarms in Genetec
- A complete history of threat alerts and request assistance notifications



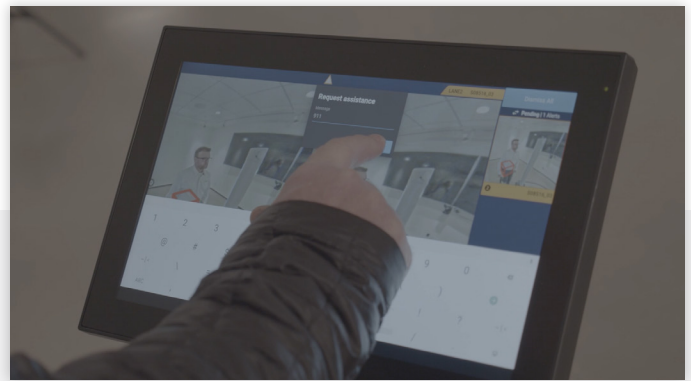
Integrations are prebuilt and easy to configure in the MyEvolv portal by administrators with access permissions to both systems.

Extend the Potential of Genetec Security Center to Your Venue’s Threshold

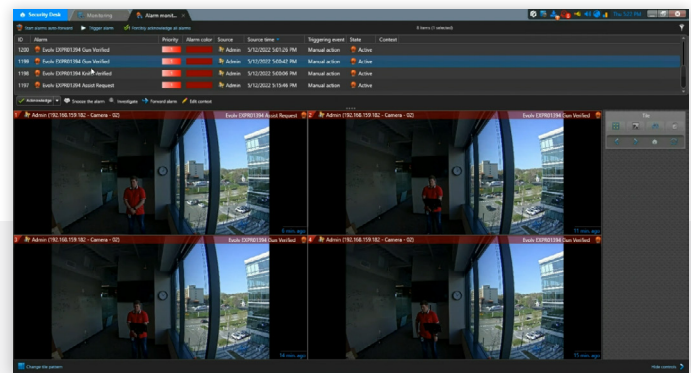
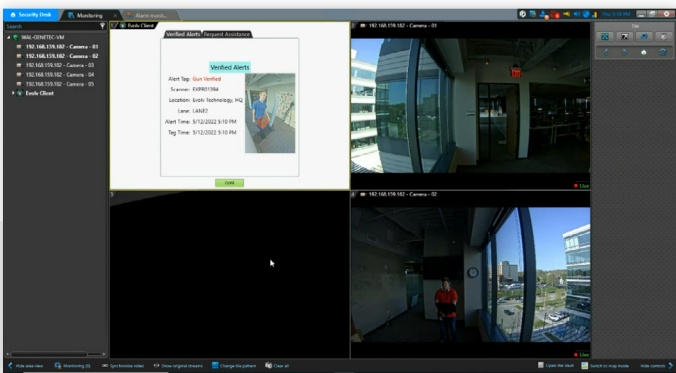
Store Evolv Express alerts and Request Assistance notifications in context with other Genetec data captured across the venue, enabling post-event forensics. Upon receipt of a verified weapons alert at an Evolv Express system, the system logic and workflow capabilities built into the Genetec Security Center system can orchestrate different responses based on venue protocols and situation severity.

With the VMS Integration

- The front and rear surveillance cameras on Evolv Express add new sources for Genetec video feeds, capturing eye-level streams of visitors as they enter and pass through each system.
- Associate alert image captures from Express with the video feed from any camera connected to the Genetec Security Center.
- Captured images can be added to a gallery to prevent subjects from entering the venue again.
- Video analytics and mapping packages that integrate with Genetec Security Center can be leveraged to extend the power of capturing threat information data at the venue's threshold.
- The rules engine in Genetec can be configured to orchestrate signal chain notifications and workflows, including existing Genetec integrations to access control points or mass notification systems, in response to the verified weapons threat or specific Express system guard resource Request Assistance (e.g., in case of gun, lock a door or turnstile / dispatch a resource, etc.)



When an operator at the Evolv Express system tags a threat item on the tablet (above, left), the threat localization image and alert metadata (time, location, and threat type) are sent to Genetec (below, upper LH quadrant). Requests for assistance (above, right) made from the tablet are also displayed in the Genetec user experience, and they may be communicated with or without an accompanying verified alert.



The Alarm monitoring in Genetec Security Center used for historical investigations can include Evolv Express verified alerts and requests for assistance. Video from before and after the alert can be displayed when an accompanying camera has been selected upon setup.